

# WELCOME TO THE **ULTIMATE** COLLECTION

of brain-teasing puzzles and mind-melting quizzes from The Week Junior!

## BUGS, BIRDS AND REPTILES

- 1 What are bee babies called?
- 2 What's the highest number of spots ever seen on a ladybird?
- 3 What's the purpose of a spider's web?
- 4 "All bees make honey." Is that statement true or false?
- 5 What's remarkable about birds' bones?
- 6 How far do UK swallows fly each year?
- 7 What's the national bird of Australia?
- 8 What's the difference between venom and poison?
- 9 How many species of snake are native to the United Kingdom?



## ANIMALS

- 1 What makes up butterflies' wings?
- 2 What percentage of snake species are venomous?
- 3 Why do welfare groups attach tags to birds' legs?
- 4 What is camouflage?
- 5 "No animals can count." Is that statement true or false?
- 6 In addition to using their sense of smell, what do squirrels do to find their nuts?
- 7 How are sloths camouflaged?
- 8 How many species of fish are thought to exist?
- 9 What's the greatest depth below sea level at which people have seen a fish swimming?  
a) 100 m b) 1 km c) 8 km
- 10 Why do salmon lay their eggs where they were born?



- 11 What are the only birds that can fly backwards?
- 12 What animal's scent is so strong that humans can smell it over 5.5 km away?  
a) Elephants  
b) Skunks  
c) Squirrels
- 13 What animal has the most powerful bite?
- 14 What kind of fish is eaten most around the world?  
a) Cod  
b) Bream  
c) Tuna
- 15 What is the world's fastest land animal?
- 16 What are the world's biggest fish?



## CONTINENTS

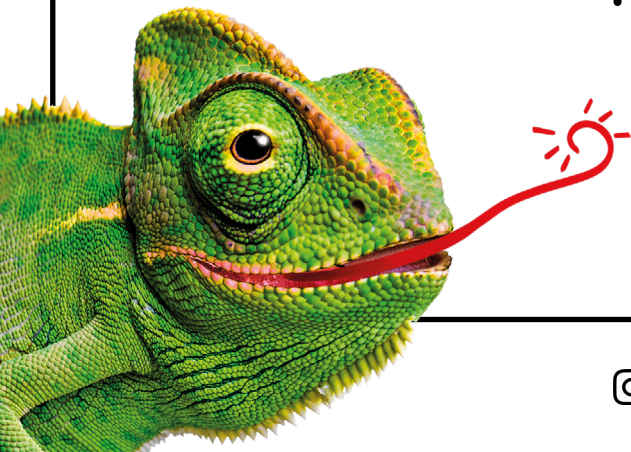
- 1 Which is the largest continent in the world?
- 2 Which is the most visited continent?
- 3 How many of the people in Asia live in cities?  
a) Around 90%  
b) Around 2%  
c) Around 55%
- 4 Why does the Eiffel Tower glow during summer?
- 5 How long ago do experts believe geometrical shapes were first drawn?
- 6 What's at the centre of the Arctic Circle?



# ANSWERS

## BUGS, BIRDS AND REPTILES

- 1 Larvae
- 2 24
- 3 Catching food
- 4 False
- 5 They're hollow
- 6 Up to around 10,000km
- 7 Emu
- 8 Venom is harmful when it is injected (e.g. bitten into skin). Poison is harmful if swallowed or breathed in.
- 9 Three



## ANIMALS



- 1 Scales
- 2 18%
- 3 To identify them
- 4 A way of hiding by blending in (using colour or patterns)
- 5 False
- 6 Use their memories to create maps in their head
- 7 Plants grow in their hair
- 8 Over 32,000
- 9 8km
- 10 Because they don't know it's a safe environment



- 11 Hummingbirds
- 12 Skunks
- 13 Crocodile (Nile crocodile)
- 14 Tuna
- 15 Cheetahs
- 16 Whale sharks



## CONTINENTS

- 1 Asia
- 2 Europe
- 3 Around 55%
- 4 The metal expands when it's hot
- 5 Over 70,000 years ago
- 6 The North Pole

