

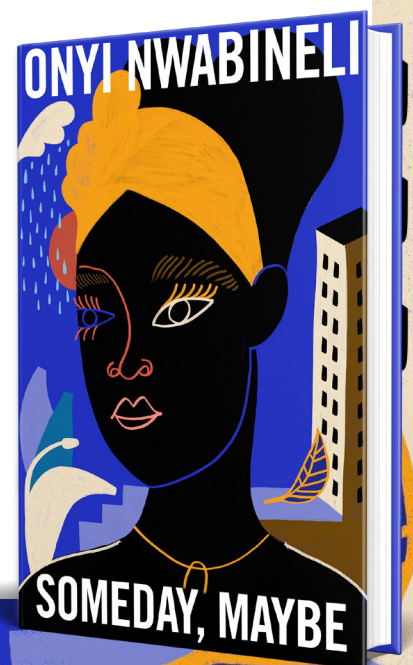
SOMEDAY, MAYBE

READING GROUP GUIDE

A one-line summary of Onyi Nwabineli's debut novel, *Someday, Maybe*, might appear contradictory: a poignant novel about the ramifications of an unexplained suicide? It doesn't scream 'uplifting' or 'humorous' at first glance. And yet Onyi Nwanbineli manages to tread the tightrope between sensitivity and wit, emotional realism and self-deprecating, whip-smart humour, with a winning lightness of touch. We hope you find *Someday, Maybe* as thoughtful, compassionate and unexpectedly joyful as we do, and that these questions enhance your discussion of the novel. If you haven't finished the book yet, beware—spoilers below!

For anyone affected by the issues raised in *Someday, Maybe*, you will find the names of organisations who can help on p. 347.

1. Eve and Quentin meet at ages nineteen and twenty. Do you think their age and lack of romantic experience has any bearing on their relationship dynamic? If so, in what ways?
2. The story begins after Quentin's suicide. Does knowing that he is already dead, and knowing how he died, shape the reading experience or colour your perception of him in any way?
3. What significance, if any, do you believe Quentin's upbringing and background have on his relationship with Eve and her family, and his inability to voice his struggles?
4. How do you interpret the various manifestations of Eve's grief? When, if at all, do you feel the healing process begins for her?



5. Eve is from a Nigerian (Igbo) background. How do you think her culture influences how she and her family deal with Quentin's death and the grieving process?
6. Eve and Aspen have always had a contentious relationship. How do you feel Quentin's death impacted this? What do you think about the way Aspen and Eve behave in the aftermath?
7. Although Eve and Quentin were unsure about children, Eve learns she is pregnant quite by accident but ultimately decides to keep her baby. What do you think led to this decision? Do you think the same decision would have been made if Quentin was alive?
8. Eve becomes fixated on She. Why, out of all of Quentin's work, do you think this particular photograph resonates with her?
9. Despite her promise to Nate, Eve is unable to attend the support group and chooses a life drawing class instead. Why do you think she is so averse to joining the group or seeking out a therapist? Why does art appeal to Eve? Why does she choose to stay in the class?
10. What were your thoughts when it was revealed that Eve had given Aspen half of Quentin's ashes? Why do you think Aspen tried to get Eve to give her more—the ring, the rattle, possibly rights to the baby, etc.?
11. Why do you think Aspen did not acknowledge the happiness and creative achievements Quentin had in his life?
12. Eve meets Luisa and Drew during the life drawing class. What role do they play in Eve's post-Quentin life?
13. Eve and Gloria have always been close. Why do you think Gloria becomes so angry with Eve?

